



# HOSHIZAKI

## Parts List

Glass Door Freezer

Model

FM-23-HC

[hoshizakiamerica.com](http://hoshizakiamerica.com)

Number: FM-23-HC  
Issued: 01-23-2019  
Revised: 07-13-2023

## TABLE OF CONTENTS

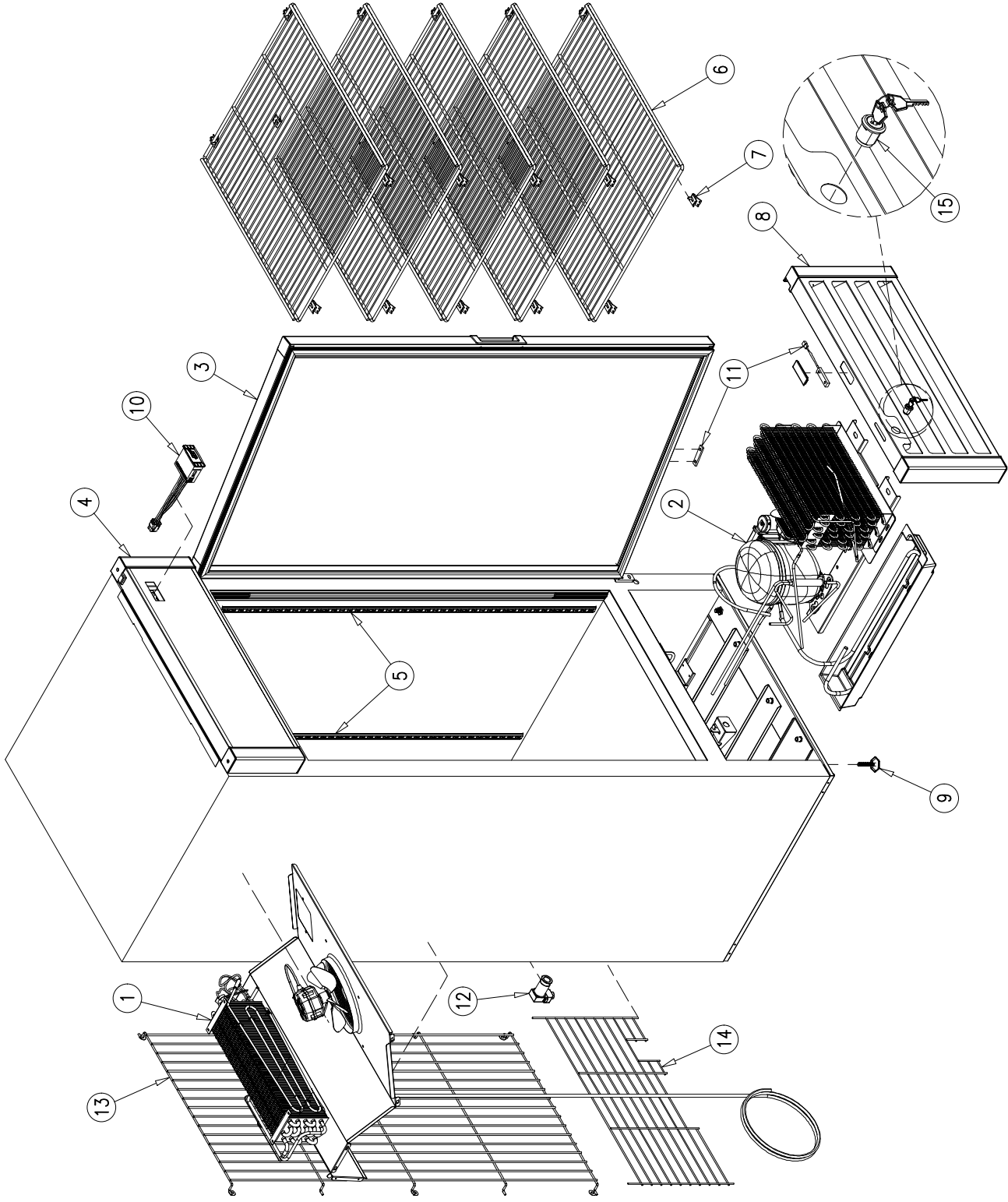
MAIN ASSEMBLY .....	3
EVAPORATOR ASSEMBLY .....	5
CONDENSING UNIT ASSEMBLY .....	7
DOOR ASSEMBLY .....	9
LIGHTING SYSTEM .....	11

**NOTE:**

*To order spare parts, always include the following information:*

- *Model Number* \_\_\_\_\_
- *Serial Number* \_\_\_\_\_

# MAIN ASSEMBLY

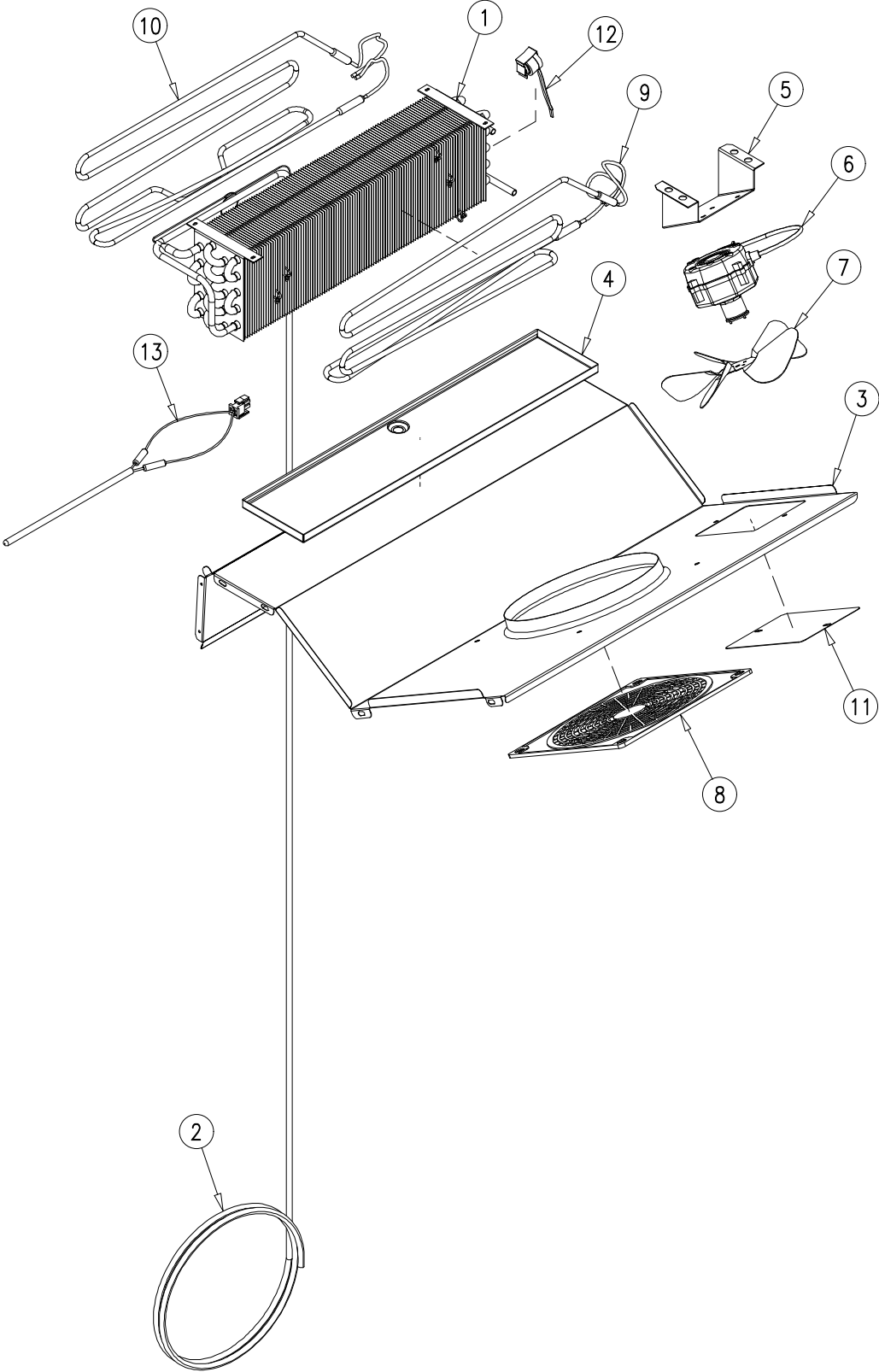


# MAIN ASSEMBLY

---

<i>Item No.</i>	<i>Description</i>	<i>Part No.</i>	<i>Quantity per cooler</i>
1	EVAPORATOR ASSEMBLY	OT-EV-0341	1
2	CONDENSING UNIT ASSEMBLY	OT-UN-0442	1
3	DOOR ASSEMBLY	OT-PT-0638	1
4	HEADER SIGN	OT-RT-0297	1
5	PILASTER (48")	PI-5	4
6	FLAT SHELF	SH-0182-LEDR-HD	5
7	SHELF CLIPS	CL-51-SS-E	20
8	FRONT GRILL	OT-CM-0514	1
9	LEGS	LG-27	4
10	CONTROL MODULE (XR07CH)	CT-69-DI-153	1
11	DOOR SWITCH	EL-306	1
12	PRESSURE RELIEF VALVE	VA-110	1
13	INTERIOR GRILL	SH-0576-G	1
14	BACK GRILL	SH-0262-G-GR	1
15	LOCK AND KEY SET	HA-471-G-K	1

# EVAPORATOR ASSEMBLY

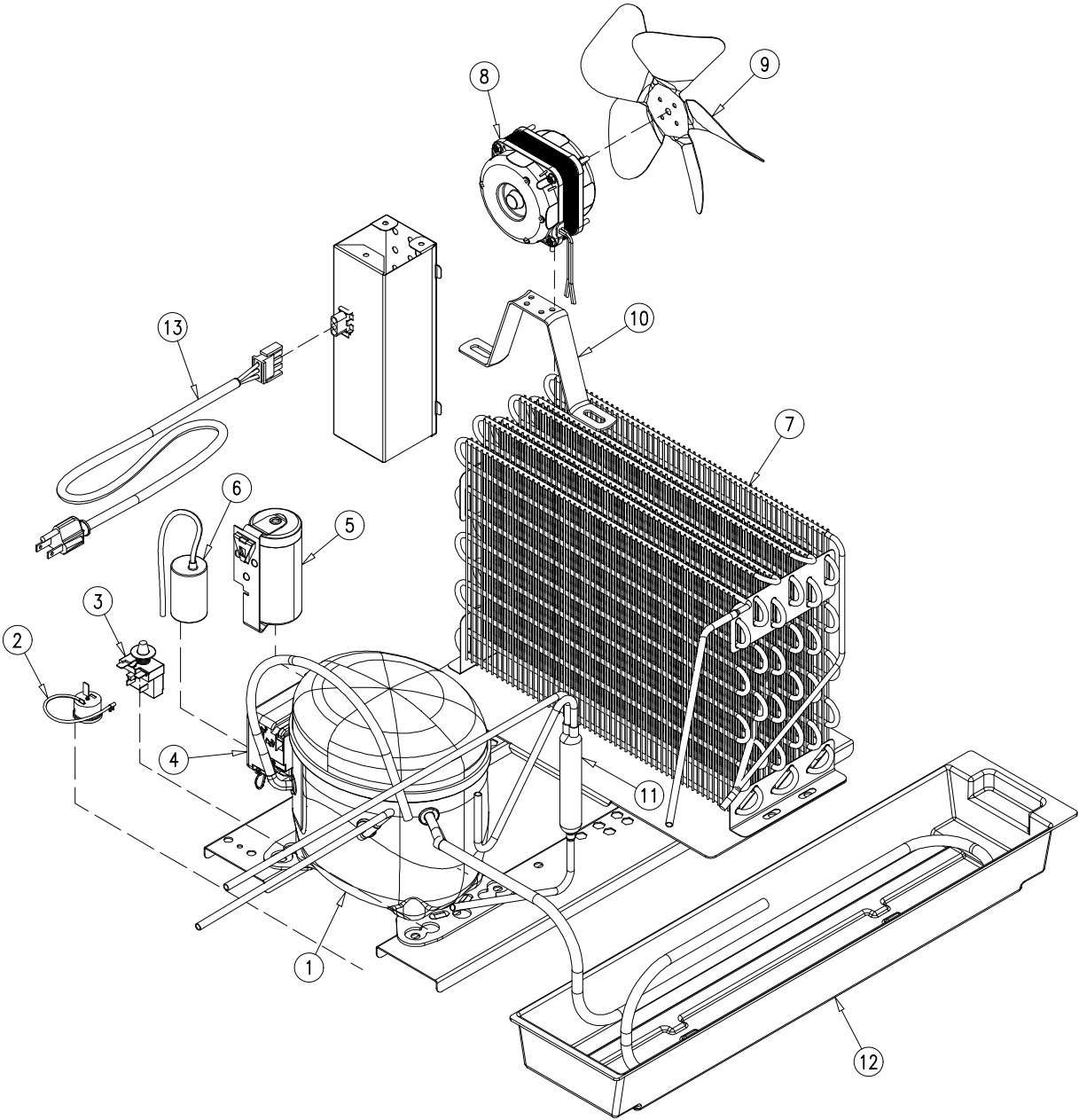


# EVAPORATOR ASSEMBLY

---

<i>Item No.</i>	<i>Description</i>	<i>Part No.</i>	<i>Quantity per cooler</i>
1	EVAPORATOR	CO-390	1
2	HEAT EXCHANGER	OT-TUB-1299	1
3	SHROUD	OT-24690	1
4	EVAPORATOR PAN	OT-23298	1
5	EVAPORATOR FAN MOTOR BRACKET	OT-21719	1
6	EVAPORATOR FAN MOTOR	FA-122-SW-1800	1
7	EVAPORATOR FAN BLADE	FA-2-SW	1
8	FAN GUARD	FA-62	1
9	DEFROST HEATER A	OT-EL-238-D-R290-CO-390-A	1
10	DEFROST HEATER B	OT-EL-238-D-R290-CO-390-B	1
11	SHROUD COVER	OT-9059	1
12	DEFROST SAFETY THERMOSTAT	OT-CT-11-R-EM	1
13	DRAIN HEATER (3.3W)	EL-851-V1	1

# CONDENSING UNIT ASSEMBLY



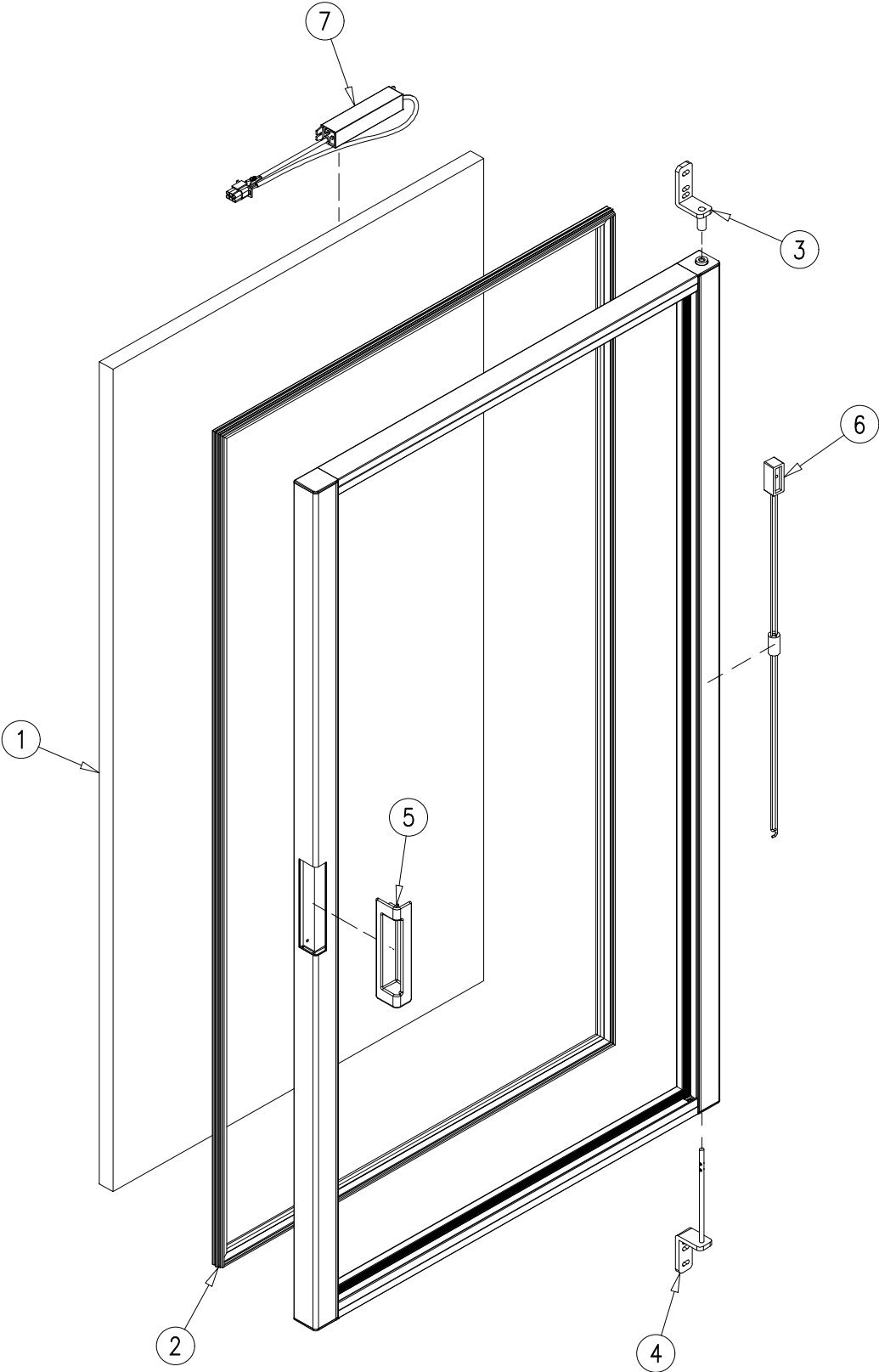
# CONDENSING UNIT ASSEMBLY

---

<i>Item No.</i>	<i>Description</i>	<i>Part No.</i>	<i>Quantity per cooler</i>
1	COMPRESSOR (1/2 HP 115V/60HZ R-290)	NPT16LR	1
2	EXTERNAL PROTECTOR (TO534)	EL-2142-R	1
3	RELAY (2014 191)	EL-2141-R	1
4	ELECTRICAL BOX	EL-2117-R	1
5	START CAPACITOR (200 $\mu$ F 160V)	CAP-200-160	1
6	RUN CAPACITOR (30 $\mu$ F 250V)	CAP-30-250	1
7	CONDENSER	CO-454	1
8	CONDENSER FAN MOTOR	FA-122-SW-1800	1
9	CONDENSER FAN BLADE	FA-2-SW	1
10	CONDENSER FAN MOTOR BRACKET	FA-18	1
11	DRIER	DR-31-P	1
12	DRAIN PAN	OT-TF-1191	1
13	POWER CORD (9 ft)	OT-EL-1260-9-4784	1



# DOOR ASSEMBLY

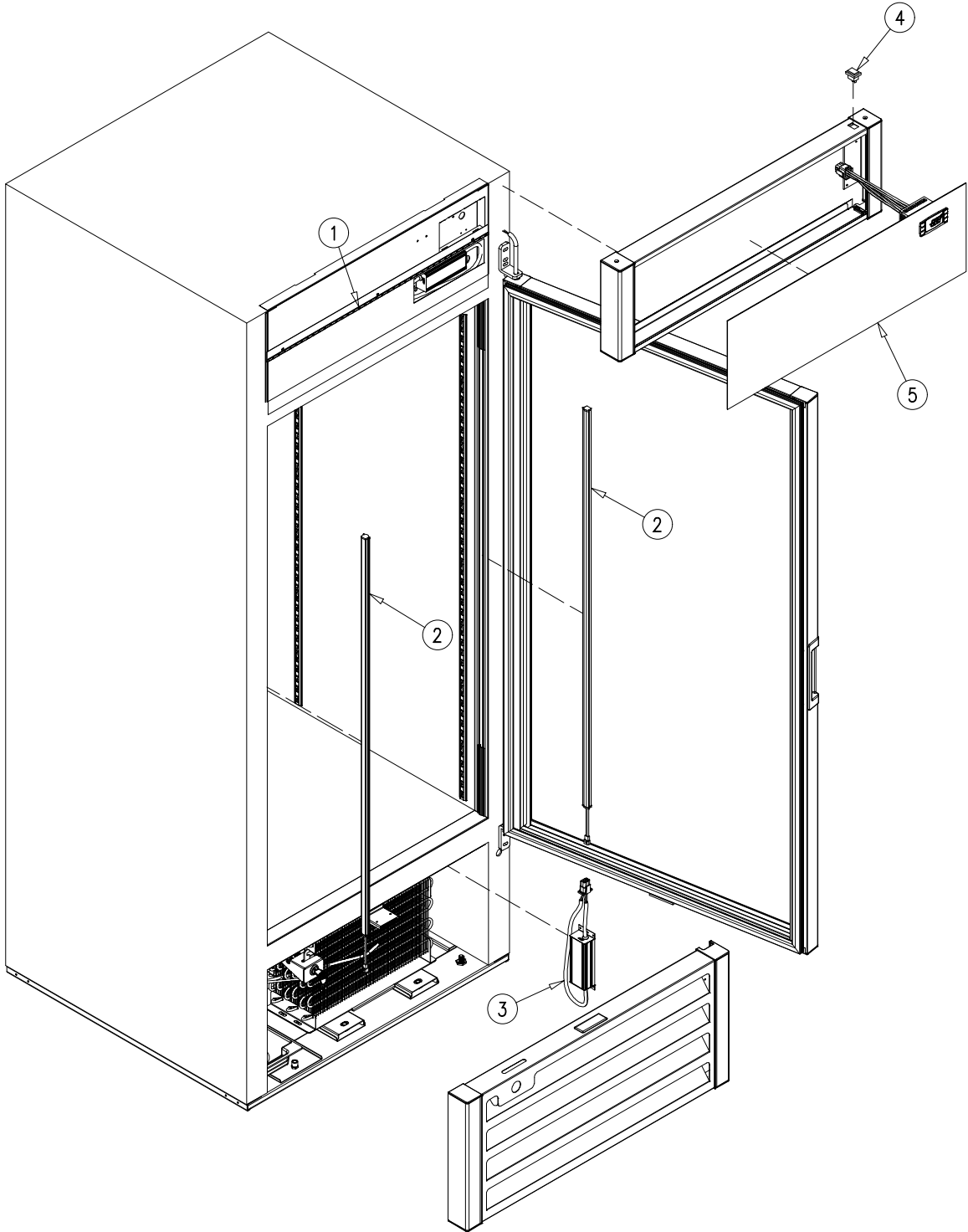


# DOOR ASSEMBLY

---

<i>Item No.</i>	<i>Description</i>	<i>Part No.</i>	<i>Quantity per cooler</i>
1	GLASS PANE	GL-677-AT-H-HF-D-US	1
2	MAGNETIC GASKET	OT-GA-900-PT-0638	1
3	UPPER HINGE ASSEMBLY	HA-536-R-K	1
4	LOWER HINGE ASSEMBLY	HA-522-R-K	1
5	DOOR HANDLE	HA-632-K	1
6	TORSION MECHANISM	HA-479	1
7	HEATED GLASS PANE POWER SUPPLY	OT-EL-869-T-6543	1

# LIGHTING SYSTEM



# LIGHTING SYSTEM

---

<i>Item No.</i>	<i>Description</i>	<i>Part No.</i>	<i>Quantity per cooler</i>
1	HIGH INTENSITY FLEXIBLE LED STRIP (19 3/4")	EL-171-60	1
2	LED LAMP STRIP (39 3/8")	EL-148	2
3	LED DRIVER (1.25 Amp.)	OT-EL-151-T	1
4	LIGHT SWITCH	EL-305	1
5	ACRYLIC SIGN	OT-ROT-0153	1